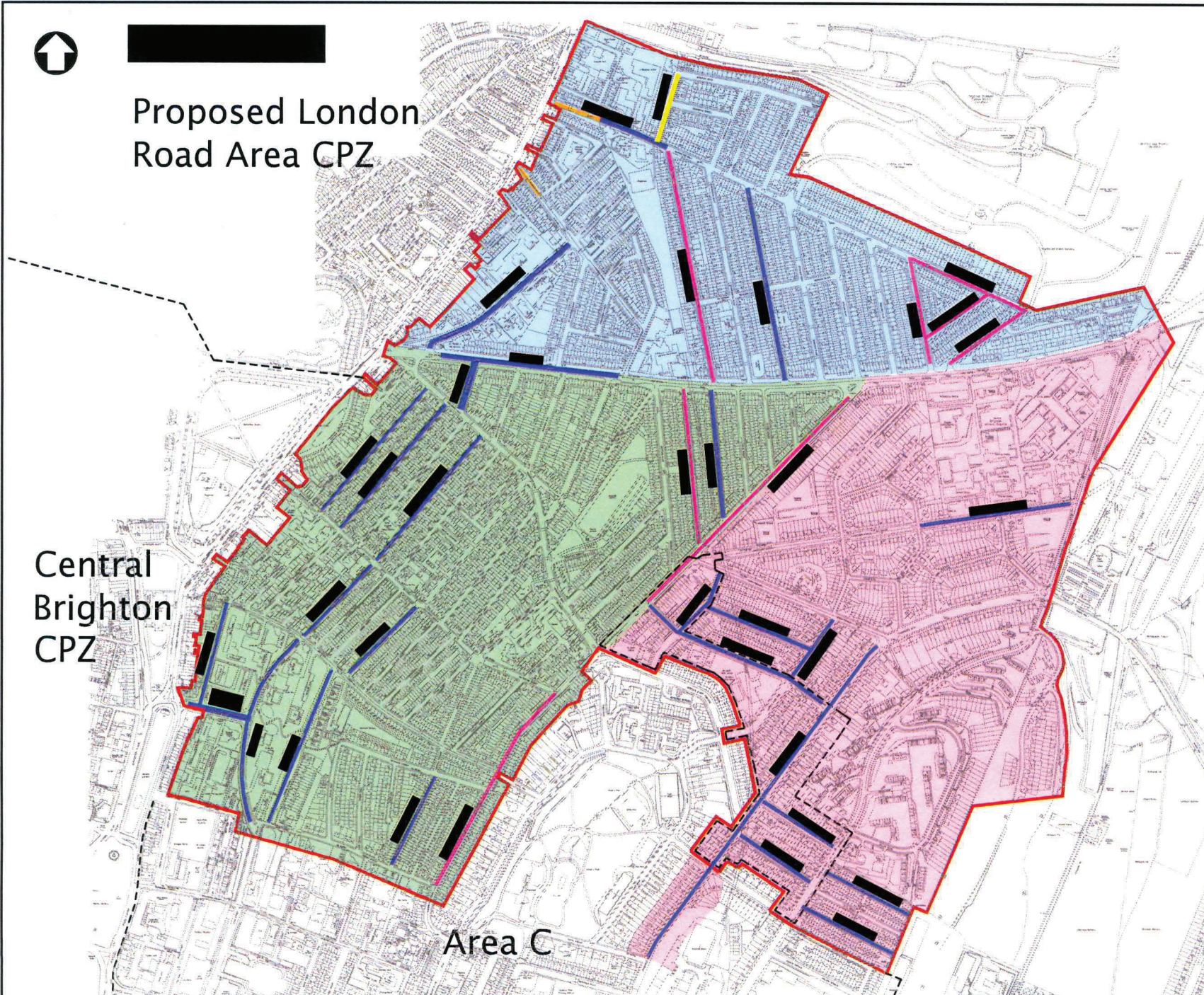




Proposed London Road Area CPZ



Central Brighton CPZ

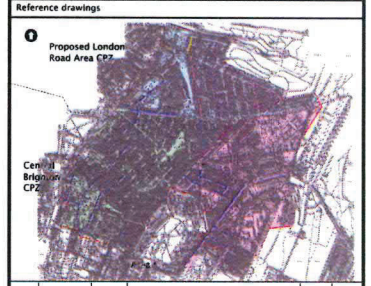
Area C

Notes

PRELIMINARY
DO NOT USE FOR CONSTRUCTION
Mott MacDonald Date: 02/03/2010

APPENDIX B

- Key to symbols
- Accumulation surveys - 5am, 10am, 1pm, 4pm, 8pm
 - Accumulation surveys recording number plates - 5am, 10am, 1pm, 3pm, 8pm
 - Accumulation survey recording number plates - 5am, 10am, 3pm, 8pm
 - Hourly beat survey recording number plates between 8am and 6pm
 - Area 1 - North of Elm Grove
 - Area 2 - South of Elm Grove and West of Queen's Park Road
 - Area 3 - East of Queen's Park Road
 - Existing Area U CPZ Boundary
 - Proposed CPZ Boundary



P2	02/03/10	MR	Changes Following Client Requests	RH	RGB
P1	11/05/09	AS	Hannover/Elm Grove Survey Plan	RH	RGB
Rev	Date	Drawn	Description	CHK'd	App'd

Mott MacDonald

St Anne House
Wellshy Road
Croydon CR9 2UL
United Kingdom
Tel +44 (0)20 8774 2000
Fax +44 (0)20 8661 5706
Web www.mottmac.com

Client
Brighton & Hove City Council

Title
**Brighton Residents Parking Zone Development
Hannover and Elm Grove Area
Survey Plan**

Designed		Eng.Chk.	
Drawn	AS	Coordination	
Dwg.Chk.	eh	Approved	rcz
Scale at A1	Project 244884	Status	
	CAD file 244884-SVY-3001.dwg		
Drawing No	244884-SVY-3001		Rev P2

© Mott MacDonald Limited
This document should not be relied on or used in circumstances other than those for which it was originally prepared and for which Mott MacDonald Ltd was commissioned. Mott MacDonald Ltd accepts no responsibility for this document to any other party other than the person by whom it was commissioned.

